

EXCELLENCE INSIDE DELIVERS
PRECISE RESULTS FOR A WIDE
RANGE OF VISUAL INSPECTIONS.



FLEXIVISION® 100

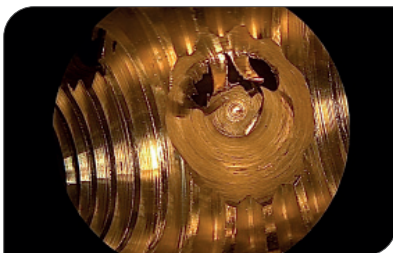
Probes & Protection tubes



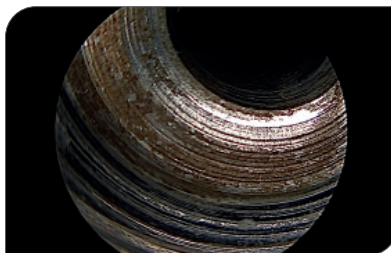
The probes of the FlexiVision 100 inspection system can be used for a wide variety of visual inspections. They can be attached to the camera handpiece with a quick coupling. Because of their easy handling and the light weight of the camera handpiece and probe, the system is suitable both for quick tests and 100% inspections. The probes are available in small working diameters with different viewing directions. With the use of protection tubes, the service life of the probe is extended.

MAIN FEATURES

- Great number of probes suitable for innumerable applications
- Probes from 0.7 mm diameter
- Flexible and rigid probes with different viewing directions for those positions that are difficult to reach
- Quick interchange of probes
- Perfectly suitable for frequently changing inspection tasks
- Protection tubes for tough operation conditions



Sharp, high-contrast inspection images



Material deviations are clearly visible



Good lateral visibility by means of probes with side view



You couldn't find a suitable product in our range? We would be delighted to discuss your product requirements and applications with you to find a solution.

Our team is looking forward to your call under +49 7666-908-0

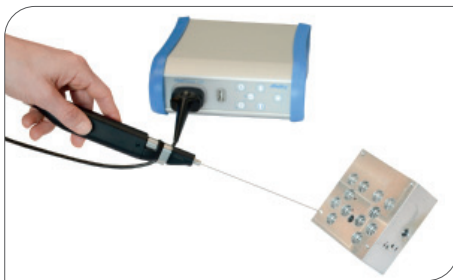
FLEXIVISION® 100

Probes & Protection tubes



GREAT NUMBER OF PROBES SUITABLE FOR INNUMERABLE APPLICATIONS

- 35 different standard probes (Ø 0.7 – 4.0 mm) ex stock
- Viewing direction from 0°- 90°
- Probe lengths between 150 and 425 mm
- Special probes
- Now new: protection tubes for all probes



PROBES FROM 0.7 MM DIAMETER

The probe with the smallest working diameter of 0.7 mm was developed for the inspection of control blocks and injection nozzles. In the meantime, they have been used for various applications where fine bore holes are tested.



FLEXIBLE PROBES AND DIFFERENT VIEWING DIRECTIONS FOR POSITIONS THAT ARE DIFFICULT TO REACH

With flexible probes and different viewing directions from 0°- 90°, positions can be inspected that might otherwise be difficult to see.



QUICK INTERCHANGE OF PROBES

The quick coupling on the camera handpiece enables a fast interchange of the probes. The light camera handpiece and the extensive probe program are ideal for frequently changing inspection tasks.



FLEXIVISION 100 – READY FOR YOUR INSPECTION TASKS IN THE FUTURE

With the FlexiVision 100, you can rely on a tried and tested probe selection that is consistently growing. With new inspection tasks, you just obtain the suitable probe.

FLEXIVISION® 100

Probes & Protection tubes



OVERVIEW

The probes for the FlexiVision 100 inspection system are available in different viewing directions, lengths and materials.

Item no.	Working Ø	Working length	Direction of view	Field of view	Description	Protection tube	Working Ø with protection tube
96.0103s	0.7 mm	150 mm	0°	70°	6,000 pixels / synthetic tube	MSP.10150	1.0 mm
96.0124s	1.0 mm	150 mm	0°	60°	17,000 pixels / nickel-titanium tube	MSP.12150	1.2 mm
96.0142s	1.6 mm	100 mm	0°	85°	30,000 pixels / nickel-titanium tube	MSP.18100	1.8 mm
96.0132s	1.6 mm	135 mm	0°	85°	30,000 pixels / nickel-titanium tube	MSP.18135	1.8 mm
96.0123s	1.6 mm	150 mm	0°	70°	17,000 pixels / synthetic tube	MSP.19150	1.9 mm
96.0165s	1.6 mm	135 mm	0°	30°	17,000 pixels / stainless steel tube	MSP.18135	1.8 mm
96.0166s	1.6 mm	150 mm	30°	75°	17,000 pixels / synthetic tube	MSP.18151*	1.8 mm
96.0167s	1.6 mm	150 mm	70°	75°	17,000 pixels / synthetic tube	MSP.18151*	1.8 mm
96.0168s	1.6 mm	150 mm	90°	75°	17,000 pixels / synthetic tube	MSP.18151*	1.8 mm
96.0134s	2.0 mm	135 mm	0°	85°	30,000 pixels / stainless steel tube	MSP.24135	2.4 mm
96.0158s	2.0 mm	135 mm	0°	90°	50,000 pixels / stainless steel tube	MSP.24135	2.4 mm
96.0152s	2.0 mm	135 mm	30°	90°	50,000 pixels / stainless steel tube	MSP.24132*	2.4 mm
96.0172s	2.0 mm	135 mm	70°	75°	30,000 pixels / stainless steel tube	MSP.24132*	2.4 mm
96.0173s	2.0 mm	135 mm	90°	75°	30,000 pixels / stainless steel tube	MSP.24132*	2.4 mm
96.0274s	2.7 mm	110 mm	0°	75°	Rod lenses / stainless steel tube	MSP.30111	3.0 mm
96.0273s	2.7 mm	110 mm	30°	75°	Rod lenses / stainless steel tube	MSP.30118**	3.0 mm
96.0280s	2.7 mm	110 mm	30° (up)	75°	Rod lenses / stainless steel tube	MSP.30118**	3.0 mm
96.0275s	2.7 mm	110 mm	70°	75°	Rod lenses / stainless steel tube	MSP.30119**	3.0 mm
96.0288s	2.7 mm	179 mm	0°	85°	Rod lenses / stainless steel tube	MSP.30174	3.0 mm
96.0297s	2.7 mm	179 mm	30°	85°	Rod lenses / stainless steel tube	MSP.30175**	3.0 mm
96.0299s	2.7 mm	179 mm	70°	75°	Rod lenses / stainless steel tube	MSP.30176**	3.0 mm
96.0293s	2.7 mm	290 mm	0°	75°	Rod lenses / stainless steel tube	MSP.30180	3.0 mm
96.0294s	2.7 mm	280 mm	30°	75°	Rod lenses / stainless steel tube	MSP.30181**	3.0 mm
96.0298s	2.7 mm	290 mm	70°	75°	Rod lenses / stainless steel tube	MSP.30182**	3.0 mm
96.0405s	4.0 mm	170 mm	0°	85°	Rod lenses / stainless steel tube	MSP.44170	4.4 mm
96.0403s	4.0 mm	170 mm	30°	85°	Rod lenses / stainless steel tube	MSP.44171**	4.4 mm
96.0404s	4.0 mm	170 mm	45°	85°	Rod lenses / stainless steel tube	MSP.44172**	4.4 mm
96.0406s	4.0 mm	170 mm	70°	85°	Rod lenses / stainless steel tube	MSP.44173**	4.4 mm
96.0407s	4.0 mm	298 mm	0°	70°	Rod lenses / stainless steel tube	MSP.44300	4.4 mm
96.0408s	4.0 mm	298 mm	27°	70°	Rod lenses / stainless steel tube	MSP.44301**	4.4 mm
96.0409s	4.0 mm	300 mm	65°	70°	Rod lenses / stainless steel tube	MSP.44302**	4.4 mm
96.0410s	4.0 mm	425 mm	45°	65°	Rod lenses / stainless steel tube	MSP.44420**	4.4 mm
96.0411s	4.0 mm	425 mm	0°	65°	Rod lenses / stainless steel tube	MSP.44421	4.4 mm
96.0412s	4.0 mm	425 mm	30°	65°	Rod lenses / stainless steel tube	MSP.44422**	4.4 mm
96.0413s	4.0 mm	425 mm	65°	65°	Rod lenses / stainless steel tube	MSP.44423**	4.4 mm

* Protection tube with exposed probe tip | ** Protection tube with protrusion and fixing screw